

RAILTON MEEKS



1 Longton Avenue

West Didsbury, Manchester, M20 3 JN

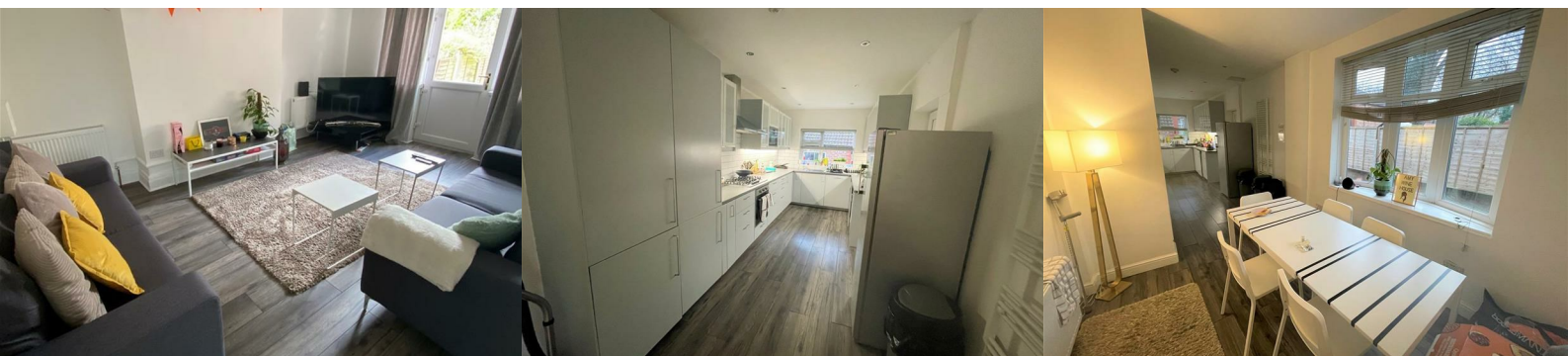
£685 Per Calendar Month



**** DOUBLE ROOM AVAILABLE IN HOUSESHARE IN WEST DIDSBBURY **** The house is situated within walking distance of Palentine Road and close to Christie Hospital as well as being very close to the Metrolink providing excellent transport links into Manchester. This well proportioned accommodation comprises of a entrance hall, large modern living room and stylish kitchen/dining room. There are three large double bedrooms and two good sized smaller double bedrooms. There are two good sized modern bathrooms situated inside the property and one WC.

All bills are inclusive with a large smart TV in the lounge and internet. The house has been renovated to a very high standard.

We recommend booking a viewing asap as this property won't be on the market long!!



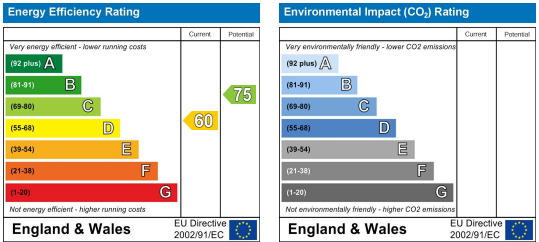
Area Map



Floor Plans



Energy Efficiency Graph



These particulars, whilst believed to be accurate are set out as a general outline only for guidance and do not constitute any part of an offer or contract. Intending purchasers should not rely on them as statements of representation of fact, but must satisfy themselves by inspection or otherwise as to their accuracy. No person in this firms employment has the authority to make or give any representation or warranty in respect of the property.